



EH  **ST** **دار مصر لتكنولوجيا الإنشاءات**
EGYPT HOUSE FOR STRUCTURAL TECHNOLOGY

THE PROFILE

www.ehstconsult.com

PARTNER OF SUCCESS



ABOUT US

EHST is an elite engineering firm with diversified experience in design execution, site management and supervision and detailing. EHST excels with structural systems as our main scope of work. The cogs on our firm are empowered by professional engineers, excelling academic professors and trained supporting staff; coming together from various universities worldwide.

EHST established in 2015 as a Structural and Geotechnical firm. Day by day EHST gained the trust of our clients.

In 2017 EHST open Architecture and Electromechanical departments, it's man power increased from 5 Engineers in 2015 to 24 Engineers in 2021.

our project reaches 20 contracted projects (either design or site supervision or both). our clients increased to 10 valuable clients.

EHST aims through the next years to became one of the famous Engineering firms in Egypt.

OUR SERVICES

Design & Site supervision

EHST has expert consultant/engineers for design and supervise for different types of projects. This team insure maximum level for safety and coordination for the design of projects hand to hand with safety for construction procedures.

OUR SERVICES

Detailed Drawings

EHST has a capability to finish minimum 10 detail drawings per day, depending on the ratio of the detail required through either BIM Model or any other detail software.

OUR SERVICES

Overall Site Planning

As our firm includes urban designers whom are expert in architectural planning of the site. In addition to, project managers to plan the project dates of submission based on the cash flow from the owner & labor/material tables from the contractor.

OUR SERVICES

Value Engineering

One of strongest capabilities for EHST is saving cost for the project. By redesigning the project and decreasing the quantities of the materials within code limit and specification of the project.



OUR SERVICES

BIM Centered

EHST can take/establish any BIM model for any project then analyze through any commercial analytical software and detailed through BIM Model.

OUR SERVICES

3D, 4D & 5D Model

One of strongest capability for EHST is using the BIM to make 3D for construction stages for any project, 4D for construction stages including time of construction and 5D for construction stages including time and material quantities. Our client can see the progress for his project day by day.

OUR SERVICES

Civil Work

EHST has road/bridge and sanitary/water designers. They are capable to design, detail and estimate the quantities for civil projects.

OUR SERVICES

Visibility Studies & Solving Problems

Before starting any project, EHST can provide a visibility study including approximate cost and the expected time for finishing any task.

OUR SERVICES

Construction Movies

For advertising purpose, EHST can provide for our client weekly/monthly movie for the project to represent the progress.

PROJECTS

Administration towers and hotels

- △ National Bank of Egypt, New Administration Capital.
- △ El Masa / El NUCA towers, New Alamin.
- △ Emaar Square, New Cairo.
- △ Multiple high-rise buildings, Cairo.

Residential compounds

- △ Park Lane, New Administration Capital .
- △ Tawila Project , El Gouna
- △ Somabay , Hurgada
- △ Haram City Project, Giza (Tender)

Hospitals

- △ As Salam international hospital, Cairo.
- △ Ahl Masr hospital, Cairo.

Industrial facilities

- △ Inco-Tech steel factory
- △ Theqa steel factory

Educational facilities

- △ University of Canda, New Administration Capital.
- △ Alsson international school, New Giza.

Governmental projects

- △ Opera House
- △ Grand Egyptian Museum
- △ Canal Sugar Company

Entertainment projects

- △ Polaris Mall, New Cairo

For more information visit www.eshtconsult.com
Or join our online community

National Bank of Egypt

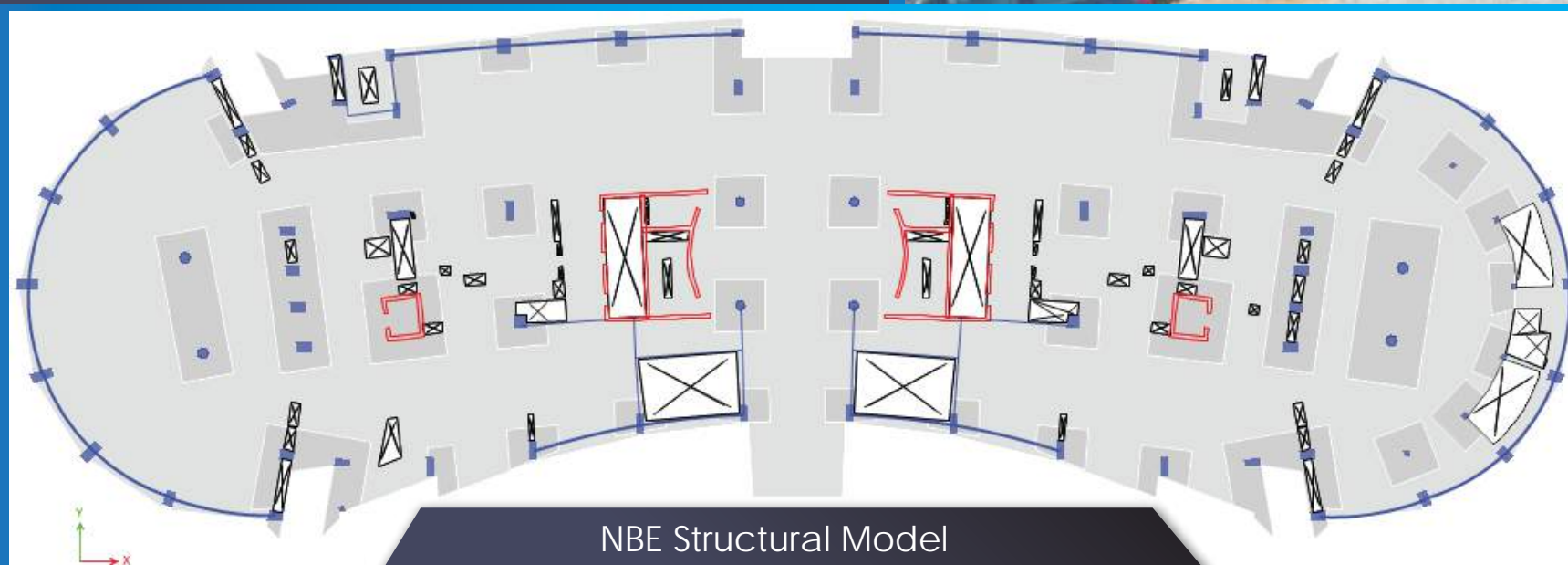
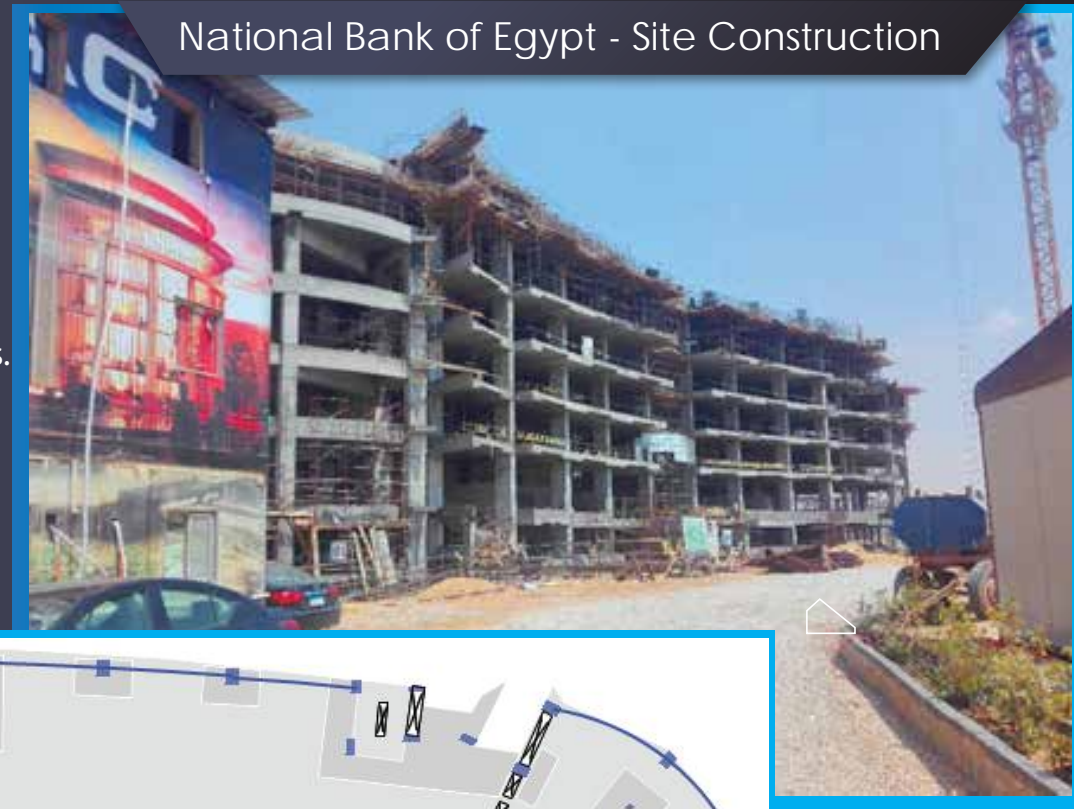
Location: New Administration Capital

Status: Contracted

The building consists of a total of 7 floors and two basements, each floor is approximately 4500 m²

EHST's Structural Scope of Work on the NBE Project:

- Safety checks including under wind, seismic and temperature loads.
- Engineering value for the project.
- Shop drawing approvals
- Technical and advisory support throughout the project.



El Masa / El NUCA towers



Location: New Alamin



Status: Tender.

El MASA towers consist of 6 towers. Each tower consists of 26 floors in addition to basement floor.

El NUCA towers consists of 4 towers. Each tower consists of 36 floors in addition to basement floor.

EHST's Structural Scope of Work on the EL MASA Towers Project:

- Safety checks including under wind, seismic and temperature loads.
- Engineering value for the project.
- Shop drawing approvals
- Technical and advisory support throughout the project.

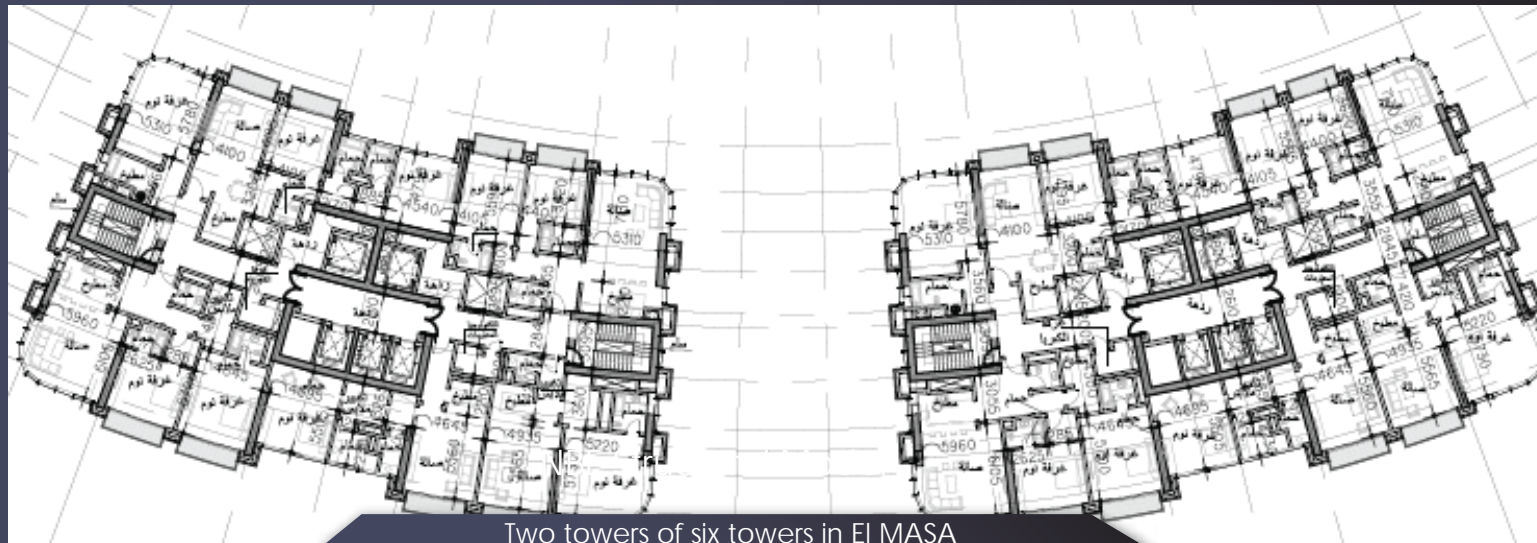
EHST's Structural Scope of Work on the EL NUCA Towers Project:

- Safety checks including under wind, seismic and temperature loads.
- Technical and advisory support throughout the project.
- All slabs are post-tension slabs

Four towers of NUCA



الأبراج العربية



Two towers of six towers in El MASA

Emaar Square

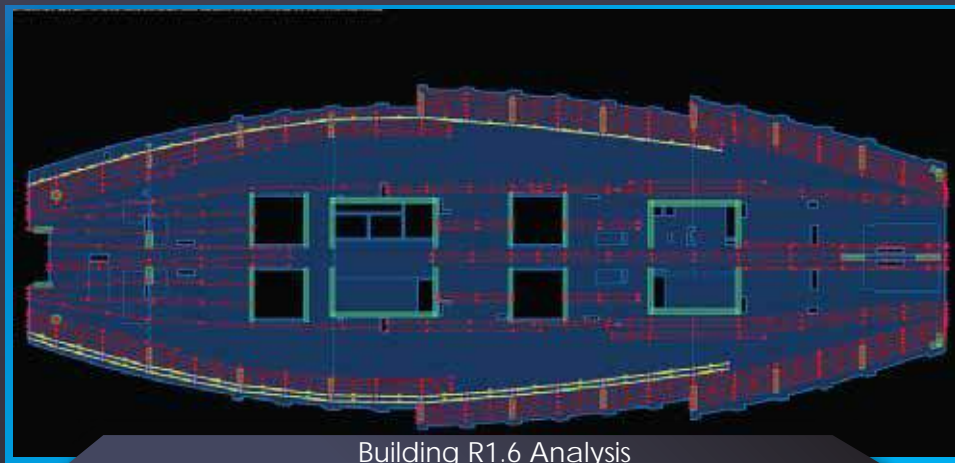
 Location: New Cairo

 Status: Tender.

Emaar Square Phase 1A consists of 5 buildings and a podium.
The buildings range from 6 to 18 floors.

EHST's Structural Scope of Work on the Emaar Square Project:

- Safety checks for post tension slabs for the 5 buildings.
- Engineering value for the project's phase 1A.
- BOQ for all buildings
- Providing alternative construction methodologies to save resources such as time and money.



Multiple high-rise buildings

Location: Cairo

Status: Contracted

Many high-rise buildings ranging between 15-30 floors in Egypt,

EHST's Structural Scope of Work on the Project:

- Loading analysis on the towers.
- Designing different structure members.
- Detailing of all structural drawings



One of our Designed High Rise Building



One of our Constructed High Rise Building

Park Lane

 Location: New Administration Capital

 Status: Contracted

The project consists of a total of 4 phases.
Each phase consists of 7 floor buildings with a ground and basement floors

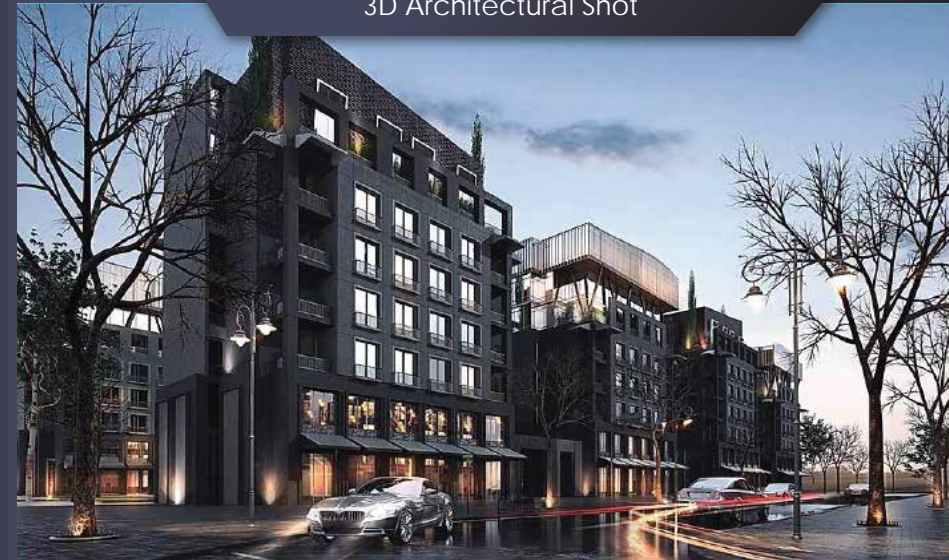
EHST's Structural Scope of Work on the Project:

- Loading analysis on the towers.
- Designing different structure members.
- Detailing of all structural drawings



Live shot of the site

3D Architectural Shot



Tawila Project

 Location: El Gouna, Hurghada

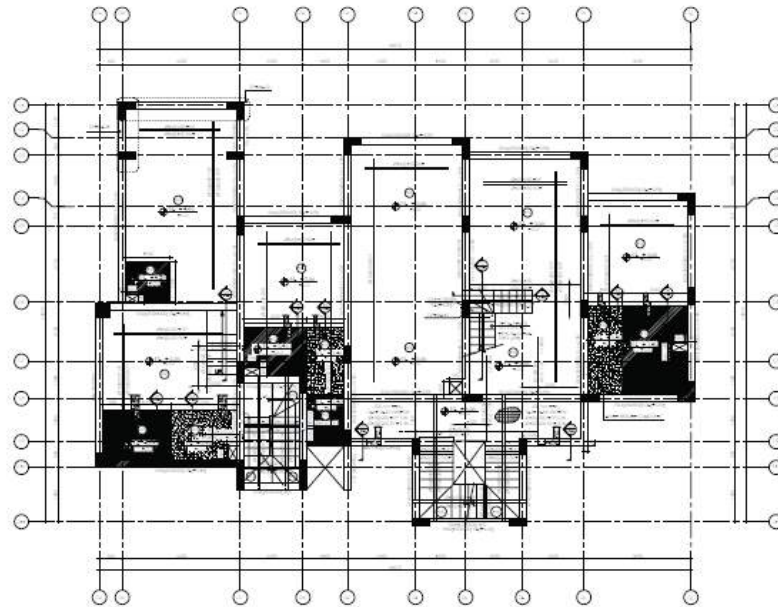
 Status: Contracted

The project consists of 4 types of villas.

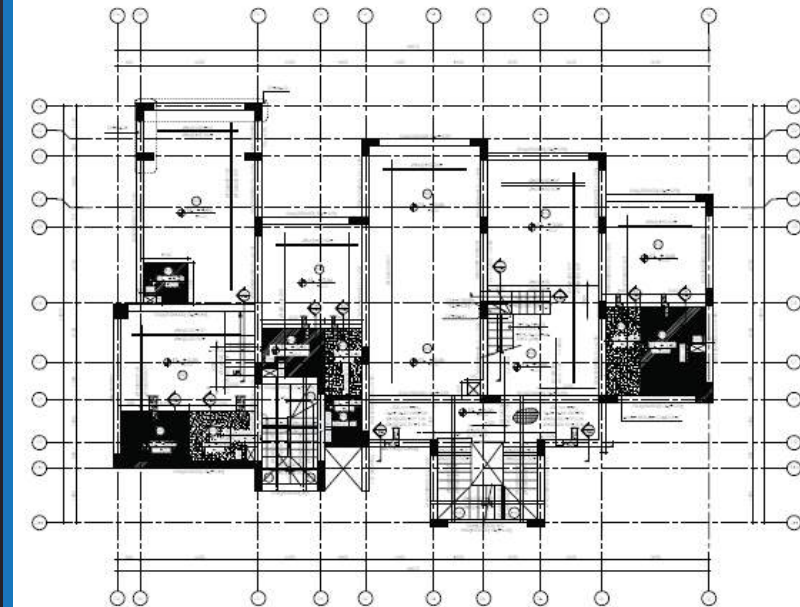
EHST's Structural Scope of Work on the Project:

- Safety checks.
- Engineering value for all types
- Coordination between structural and architectural drawings.

3D Architectural Shot



TYPE A



TYPE C

Somabay



Location: Hurgada



Status: Contracted

The project consists of different phases, EHST participated in:

- Wadi Jebal phase,
- Soma breeze phase, and
- Bay central.

EHST's Structural Scope of Work on the Project:

- Check of Safety for all types of villas,
- Value of engineering for all types, and
- Coordination between structural and architectural drawings.

Wadi Jebal photo from site



Soma breeze photo from site

As Salam international hospital



Location: Cairo



Status: Contracted

Existing hospital with area is 2250 m² and the renovation and strengthen works should done without closing the hospital.

EHST's Structural Scope of Work on the Project:

- Accurate reanalysis for an existing building according to international codes with leads to saving 30% from the repairing cost.
- Site supervision for renovation and strengthening work are supervised by EHST team.

As-Salam international hospital after renovation



Column Strengthen



Ahl Masr hospital



Location: Cairo

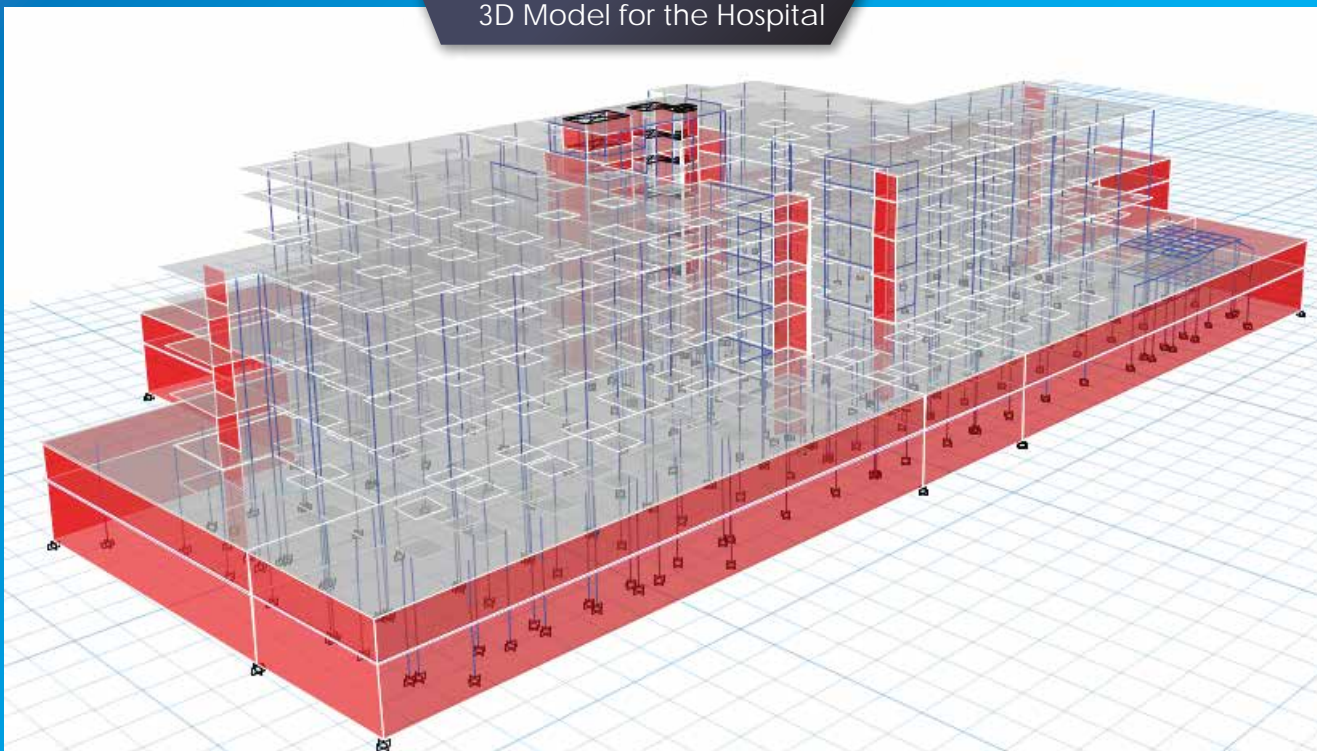


Status: Contracted

EHST's Structural Scope of Work on the Project:

- Check of safety for the building under wind/ seismic/ temperature loads.
- Value engineering for the project,
- Technical support during the project.

3D Model for the Hospital



Ahl Masr



Inco-Tech steel factory



Location : A factory at 10th of Ramadan city



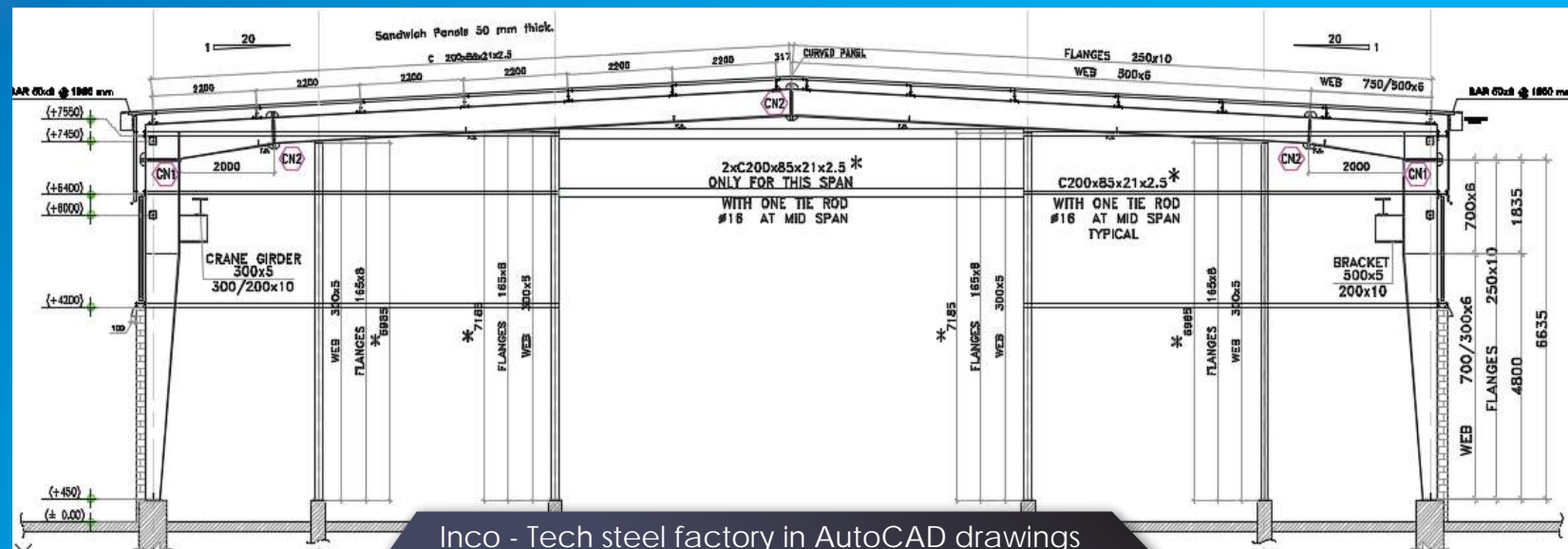
Status: Contracted

Inco - Tech steel factory consists of three phases,
 The first phase is steel factory on 10000 m²
 The cost of the first phase was 15 million EGP.

EHST's Structural Scope of Work on the Project:

- Analysis the factories under vertical loads.
- Design different structural members.
- Detail for all structural drawing.
- BOQ and prepare tender documents, and
- Site supervision until finishing the project.

Site photo for Inco - Tech steel factory



Inco - Tech steel factory in AutoCAD drawings

Theqa steel factory



Factory location: Al-Sadat city

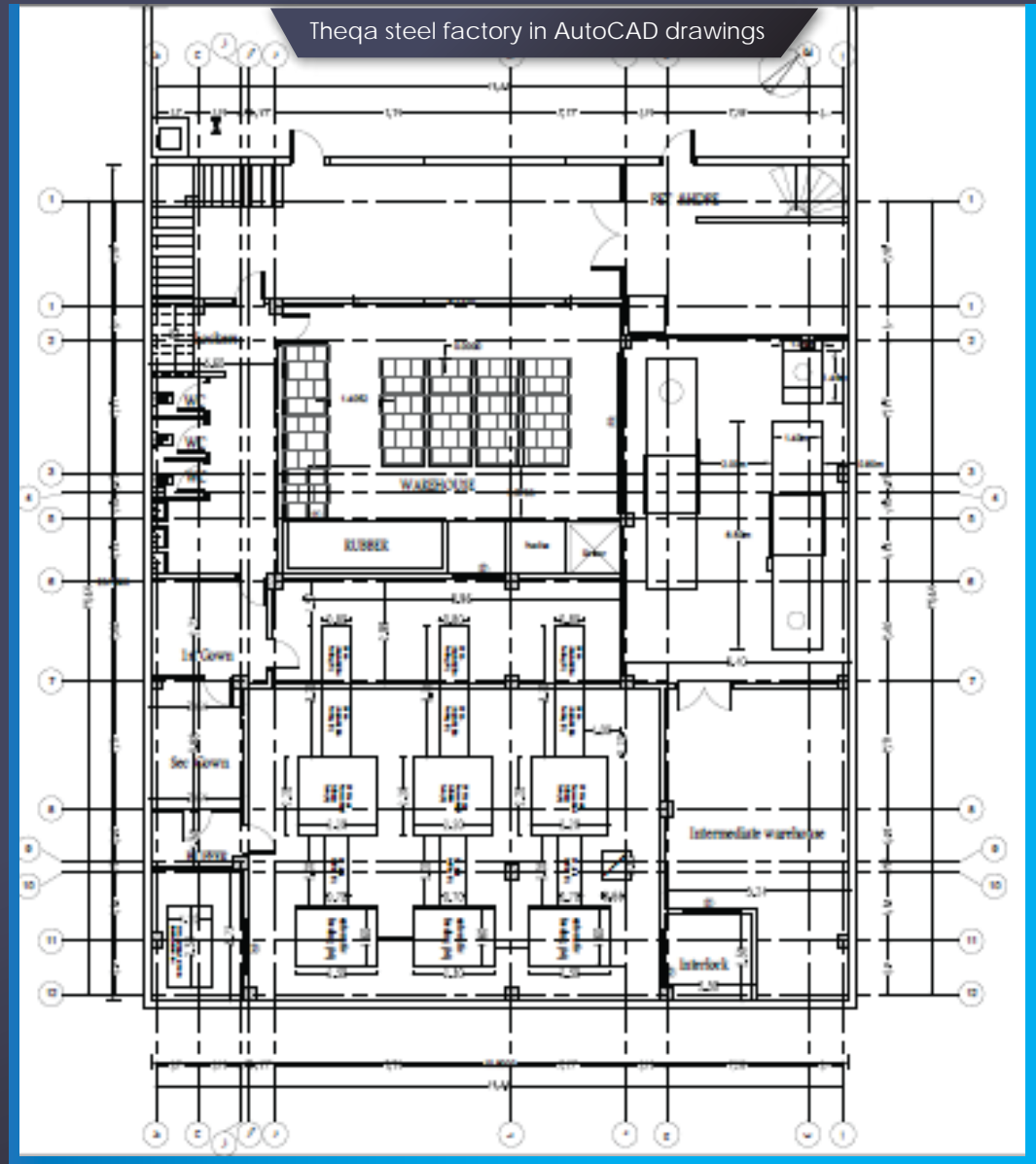


Status: Contracted

Theqa steel factory consists of steel hanger with mezzanine.

EHST's Structural Scope of Work on the Project:

- Vertical loads analysis for the factory.
- Designing different structural members.
- Detailing for all structural drawing.
- BOQ and prepare tender documents.
- Site supervision till project delivery





Location: New Administration Capital



Status: Contracted

- Phase 1 consisting of 2 buildings (800 m², 2400 m²) each one contain seven floors.
- Phase 2 consisting of 1 building (2400 m²) contains seven floors,
- Phase 1 costs 200 million EGP.
- Phase 2 costs 100 million EGP.

EHST's Structural Scope of Work on the Project:

- Analysis the buildings under vertical loads.
- Design different structural members.
- Detail for all structural drawing.
- BOQ and prepare tender documents.
- Site supervision.



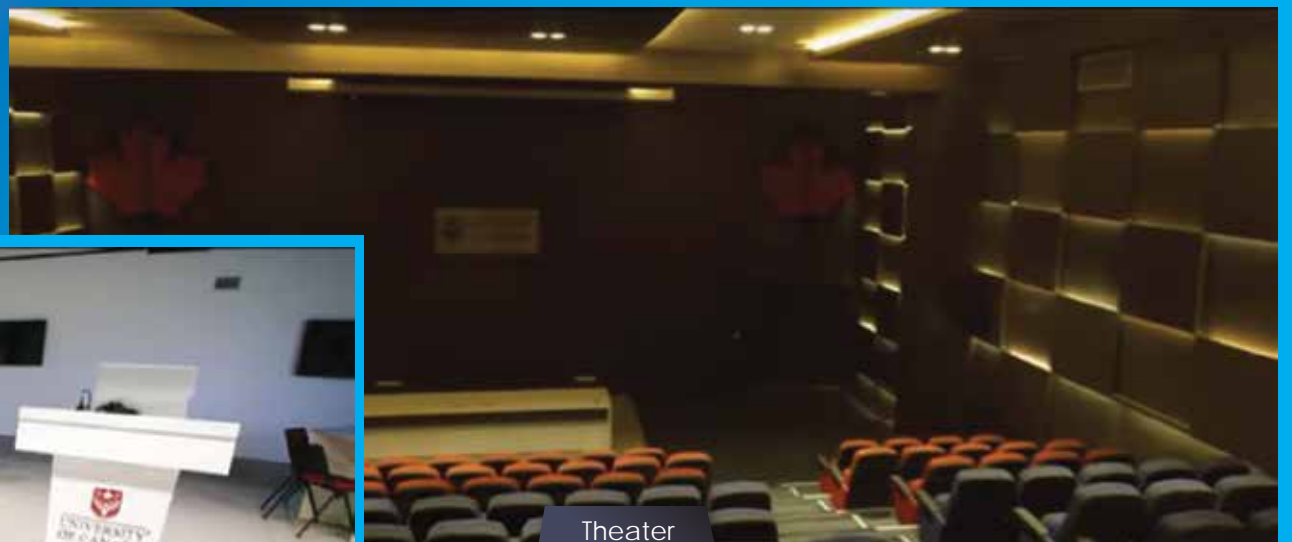
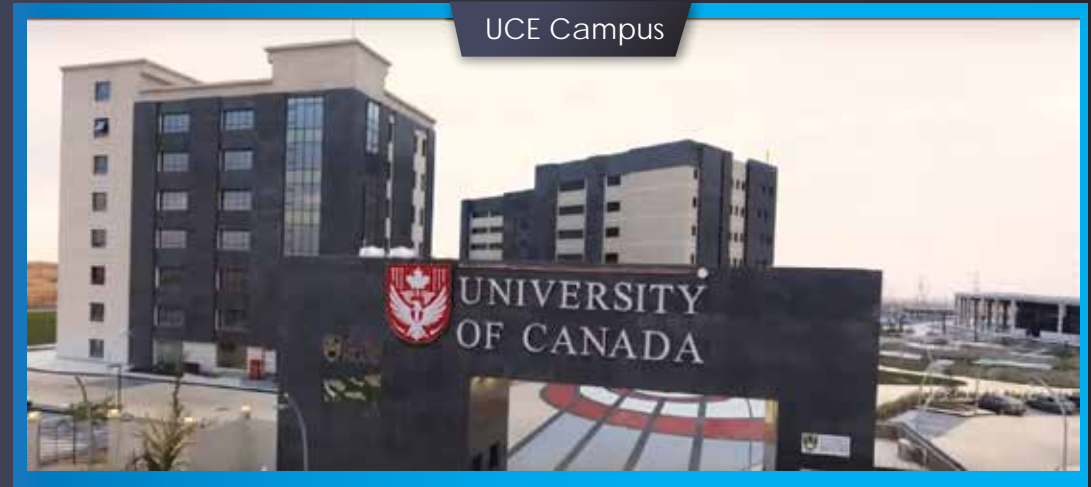
Photo from site shows the reinforcement of the raft foundation



UCE New Administration Capital

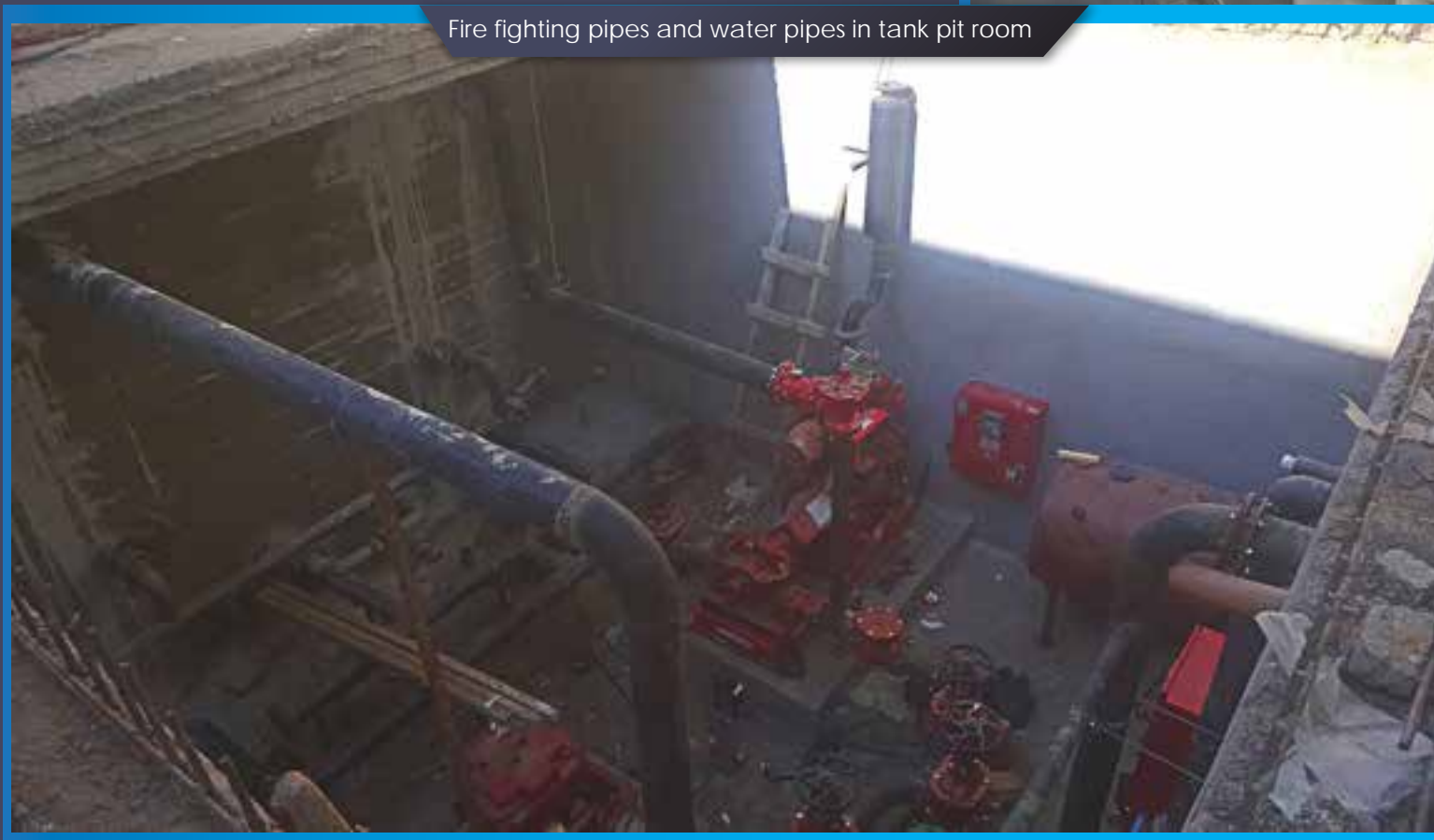
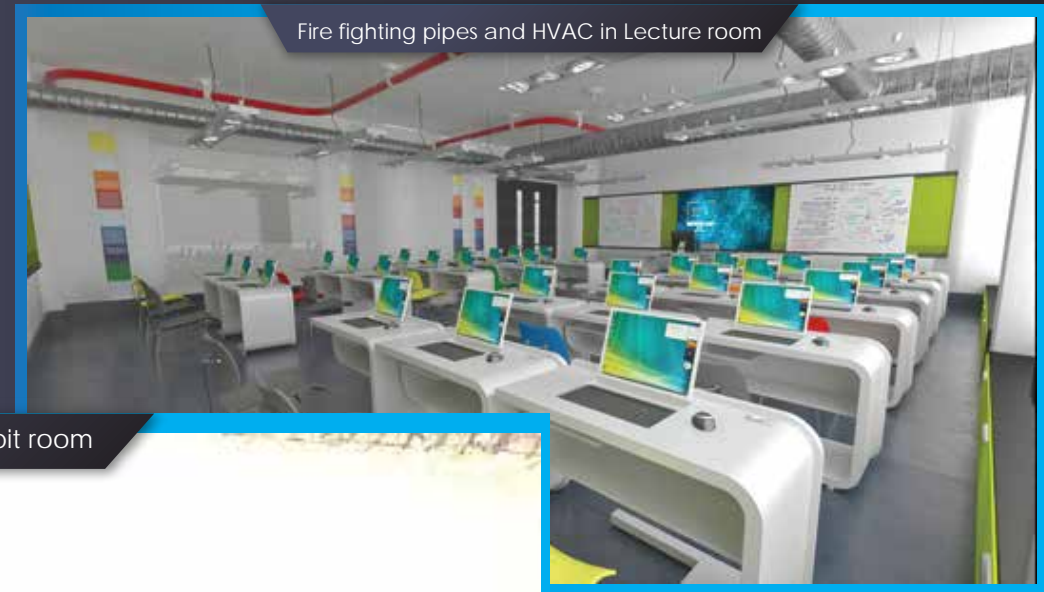
EHST's Architectural Scope of Work on the Project:

- Check the materials used in façade,
- Check the material used in landscape,
- Check the material used in full furnished,
- Propose architectural solutions,
- Detailing for all architectural drawings,
- BOQ and prepare tender documents, and
- Site supervision for all architectural works.



EHST's Electromechanical Scope of Work on the Project:

- Check the materials used in electrical.
- Check the material used in fire fighting.
- Check the material used in HVAC.
- Check the material used in water and plumbing.
- Propose electrical and mechanical solutions.
- Detailing all mechanical drawings.
- BOQ and preparing tender documents, and Site supervision for electromechanical works.



 Location: New Giza, Giza

 Status: Contracted

EHST's Architectural Scope of Work on the Project:

- Solve facade problems on site.



Opera House



Location: New Administration Capital



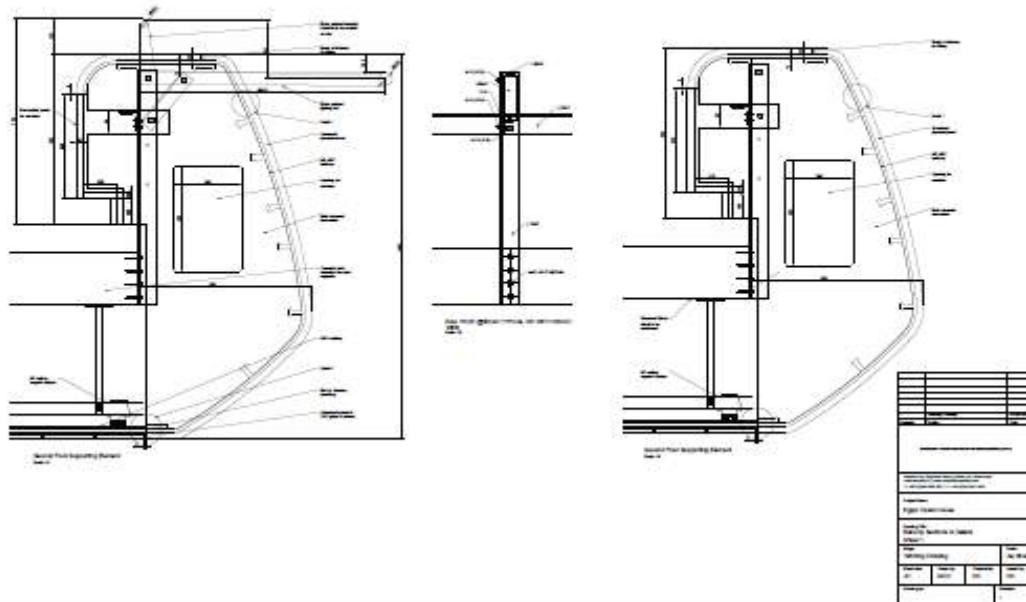
Status: Contracted

EHST's Structural Scope of Work on the Project:

- The project consists of 7 parts, EHST scope of work is for part 6.
- The project is designed and shop drawings are established for fixation of wooden cladding for Econtech .



Administration building after solving and during testing



Grand Egyptian Museum

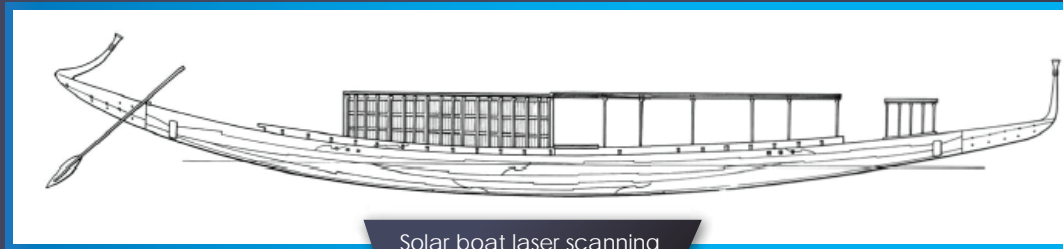
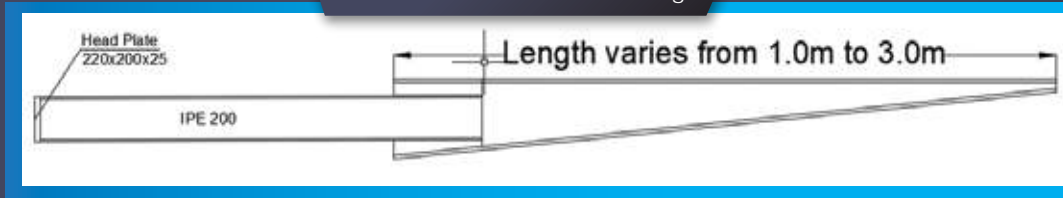
Location: Giza

Status: Contracted

EHST's Structural Scope of Work on the Project:

- Checking steel stability at the roof of museum
- Proposing a methodology for changing the location of Solar boat from the pyramids to the Grand Egyptian museum. (Tender)

Steel nose connection- Drawings



Steel nose connection



Solar Boat Photo



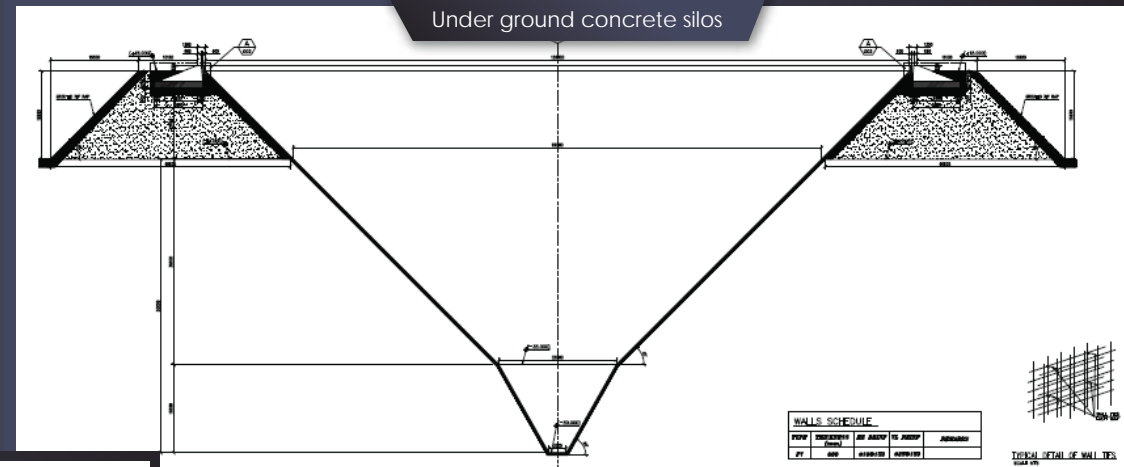
 Location: El Minia

 Status: Tender

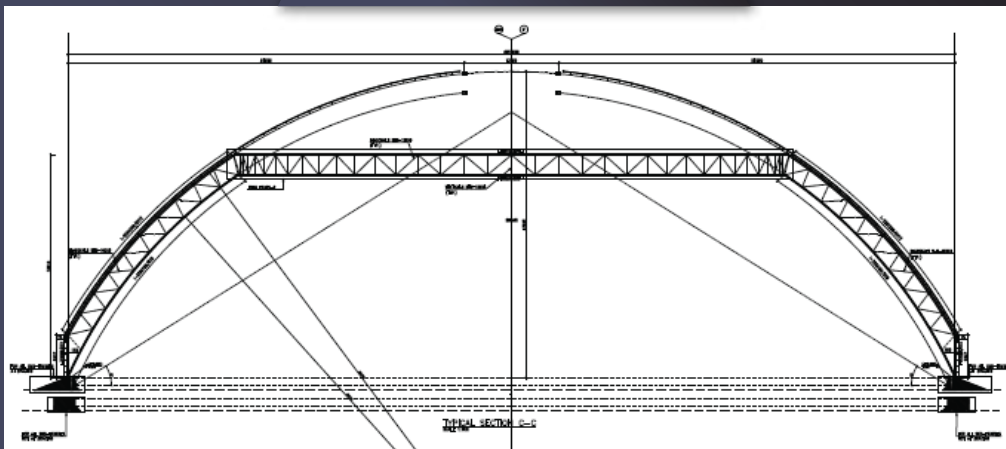
The project is consisting three underground silos with depth 50 m from ground level with steel structure on top of these silos

EHST's Structural Scope of Work on the Project:

- Safety checks for both steel and concrete structural works
- Engineering value for the project
- Shop drawing for steel structure.
- Technical and advisory assistance on site.



Steel structure at the top of these silos



Polaris Mall



Location: New Cairo



The project consists of basement with area 2400 m² and 5 floors with area 850 m²

EHST's Structural Scope of Work on the Project:

- Analysis the mall under vertical loads,
- Design different structural members,
- Detail for all structural drawings,
- BOQ and prepare tender documents, and site supervision.



Polaris Mall



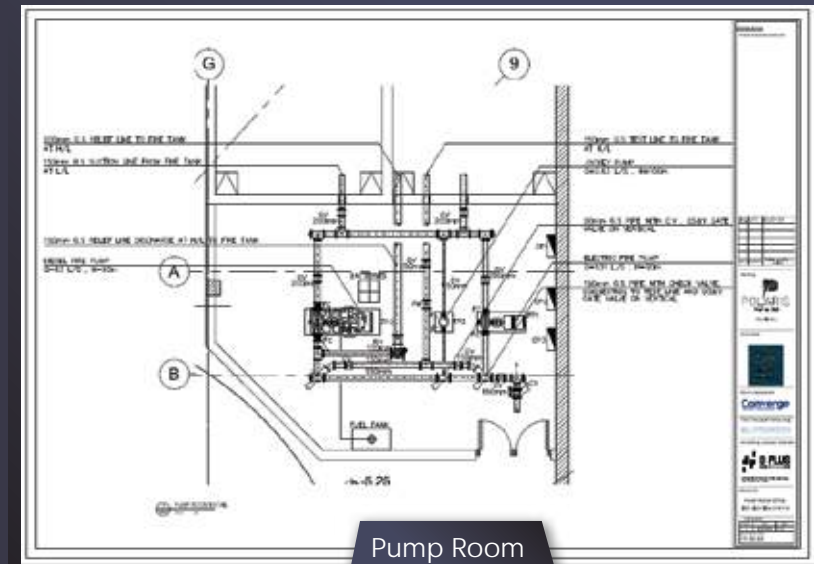
Polaris Mall

Architecture scope of work:

- Site supervision for facade package.
- Site supervision for layout.
- Site supervision for interior.
- Detail for all structural drawings.
- BOQ and prepare tender documents.

Electromechanical scope of work:

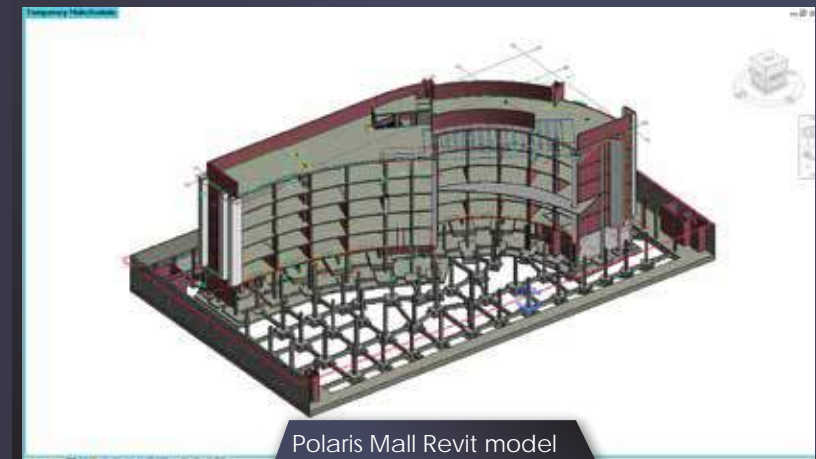
- Design electric works,
- Design HVAC,
- Design fire fighting,
- Design water and plumbing,
- Site supervision for electric works,
- Site supervision for HVAC,
- Site supervision for fire fighting,
- Site supervision for water and plumbing,
- Detail for all structural drawings,
- BOQ and prepare tender documents.



Pump Room



Polaris Mall Facade



Polaris Mall Revit model



EHST دار مصر لتكنولوجيا الإنشاءات
EGYPT HOUSE FOR STRUCTURAL TECHNOLOGY

Thank You

For more information visit www.eshtconsult.com
Or join our online community

  EHST CONSULT